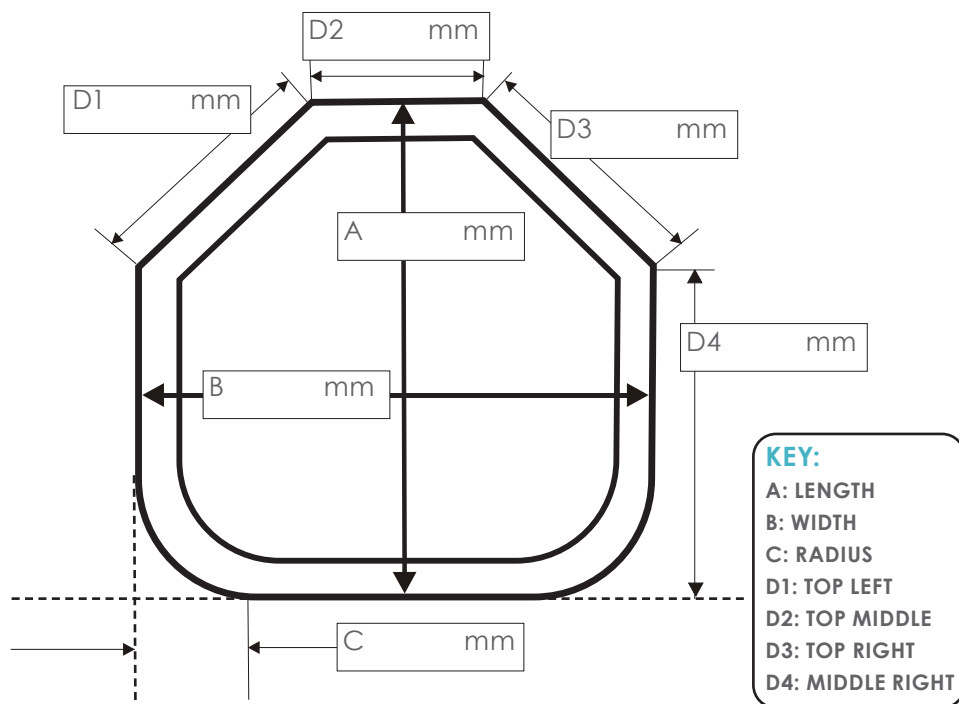


DOUBLE CUT OFF CORNERS

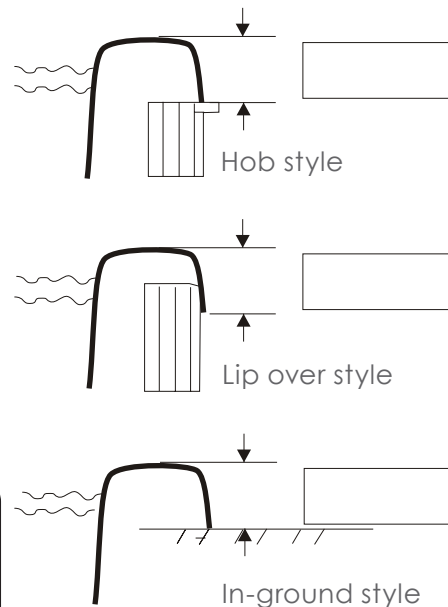
Measuring Sheet

Measure the dimensions of your spa

- outside edge to outside edge
- (measurements in mm)



Choose one fibreglass lip style and provide measurement



Provide your contact details

Your Name Contact Number(s)

Address

PO Number Delivery Yes / No

Choose options

What colour would you like your cover?

What type of cover would you like?
(please tick)

☐ Spa Cover Tier 1- Performance

☐ Spa Cover Tier 2- Endurance

*Refer to Australian Spa Covers "Tier Sheet"

Would you like your cover with our
Standard Fold or an Opposite Fold. ☐ Standard Fold

☐ Opposite Fold

*Refer to diagram and description in the Australian Spa Covers
"Measuring Guide"

If you know the make and model of your
spa, that information can be useful:

Make

Model

☐ I have read, understood and followed the Australian Spa Covers "Measuring Guide"

Measuring Guide

Double cut off corner

Measuring your spa

Measuring your spa is not difficult, with a little patience and help from a friend you will have accurate measurements in no time.

What you will need:

1. You will need two or three straight edges approximately one metre long any object with a straight edge, piece of wood, plastic or metal will do.
2. A tape measure with metric units.
3. Somebody to hold the other end of the tape for you (it is also a good idea to have this second person double check all your measurements).

Which measurements?

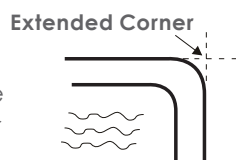
As few as three measurements may be required for your particular shaped spa, once again it is highly recommended that you ask us at Australian Spa Covers for a measuring sheet that is specific to your spa's shape.

Mandatory measurements

1. Length and width of your spa - it is important to check that your spa has the same length and width even if it looks the same.
2. Lip style & height of the lip - all spas are not the same.
3. Length of sides - any spa with more than four sides will need to have the lengths of some of the sides measured. Please refer to the length of sides and extended corners diagram for more information.
4. Radius of corners - any spa with rounded corners will need to have the radius measured. This is the most difficult of all measurements. Please ask for advice if you have difficulty with this measurement. Please refer to the definition of an extended corner and the radius of corners diagrams for more information.

Definition - Extended Corners

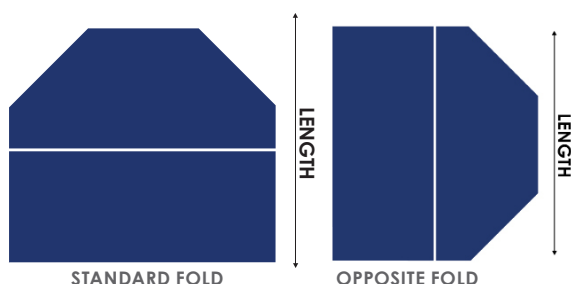
When a spa has a curved or radius corner, the extended corner is where the sides would meet had the corner not been curved.



Fold Direction:

Our standard fold direction is two-pieces divided along the longest dimension (the length) of the spa. This means the fold runs along the middle of the length, and when folded, the cover creates two halves along its longest side.

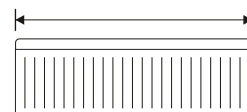
Our opposite fold direction is two-pieces divided along the shortest dimension (the width) of the spa. The fold runs across the middle of the width, creating two halves along the shorter side when folded.



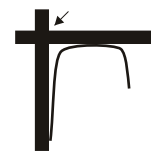
* Please note - An Opposite Fold will incur an extra charge.

Measuring length and width

Measure across the spa, outside edge to outside edge. Use an upright ruler to allow for any flare in the lip.

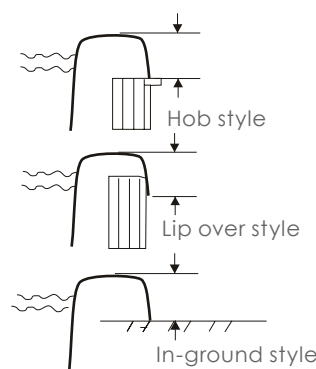


Refer to the section on direction of hinge/join when these two measurements are not the same.

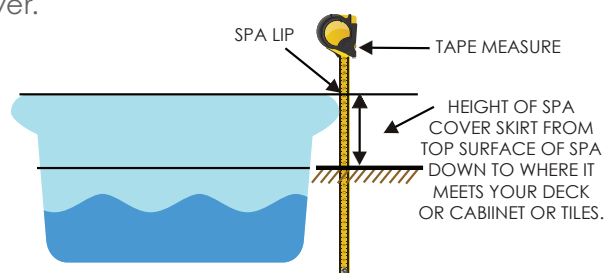


Lip style & height of lip

Use the diagrams to work out what lip style you have - this will help us work out what type of straps to include.



Use a ruler or straight edge to measure the length of the skirt required on your cover.



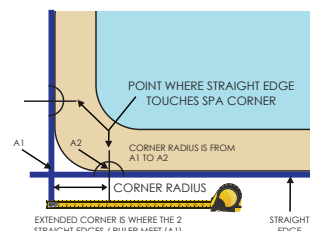
Strap placement

Please follow this QR code to visit this shape on our website. Once you input the length of your spa into the A section you will be able to view all the different strap layouts. **Note: We will not do exact measurement locations. New clips will be provided to attach to your deck or spa.**



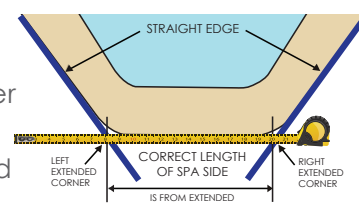
Radius of corners

Measure from the extended corner (i.e. where the sides would meet if the spa were square) to where the spa touches your straight edge.



Length of sides

Measure using straight edges from extended corner to extended corner (this measurement is not required on all spas).





AUSTRALIAN SPA COVER - TIERS

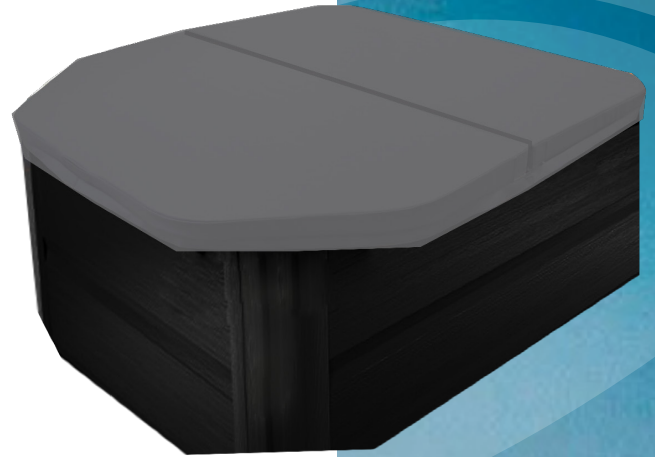
DOUBLE CUT OFF CORNERS

TIER 1 - Performance:

Our standard spa cover provides excellent durability, an attractive appearance, and additional features that set it apart from other spa covers.

Features:

- 50kg static weight bearing capacity
- Medium level of insulation
- One central vinyl handle per side
- Standard water runoff design with standard taper
- 2-year warranty
- Standard lockable strap system
- Single drainage hole per piece
- Aluminium reinforced core

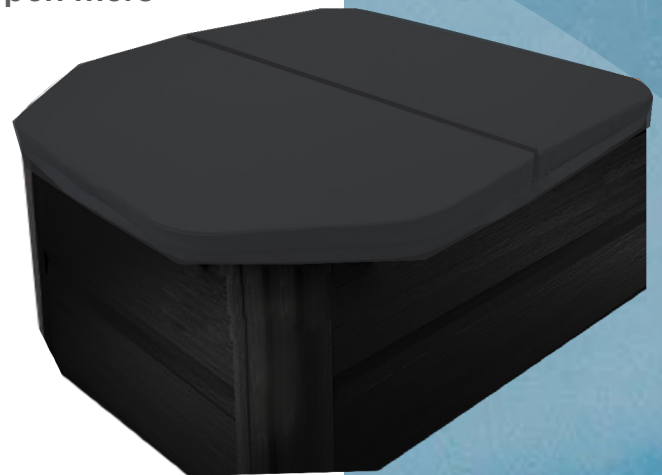


TIER 2 - Endurance:

This model offers the same benefits as our first-tier spa cover but with enhanced insulation and the ability to support more static weight.

Features:

- 100kg static weight bearing capacity
- High level of insulation
- One central vinyl handle per side
- Standard water runoff design with standard taper
- 2-year warranty
- Standard lockable tie down (strap) system
- Single drainage hole per piece
- Aluminium reinforced core



AUSTRALIAN
SPA COVERS

SPASA
MEMBER
THE AUSTRALIAN SPA ASSOCIATION