



AUSTRALIAN
SPA COVERS



AUSTRALIAN SPA COVERS STORY

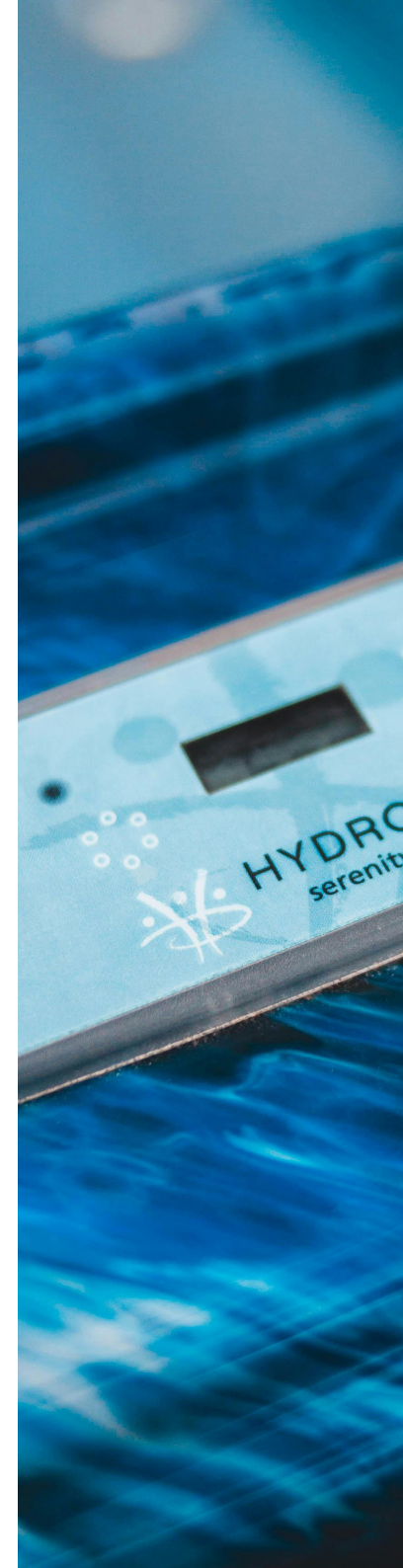


Australian Spa Covers has proudly specialized in crafting and selling top-quality spa covers for over 30 years. As a trusted Australian family business, we provide exceptional spa covers and service to our valued customers. Our extensive range of spa covers caters to a diverse array of makes and models, ensuring that every customer can find the perfect fit for their specific spa. Whether you have a compact spa or a larger model, our covers are designed to meet your needs with precision and reliability.

With seven contemporary colours to choose from, customers have the freedom to select a spa cover that not only offers exceptional functionality, durability, and longevity but also adds a stylish touch to their outdoor oasis. Our covers are manufactured using high-quality materials that are built to withstand various weather conditions, ensuring years of reliable performance. Whether you are looking for a cover that blends seamlessly with your backyard decor or one that makes a bold statement, Australian Spa Covers has the perfect option for you.

In addition to our diverse product range, Australian Spa Covers is proud to offer a comprehensive 2-year manufacturer's warranty on all our spa covers. This warranty underscores our commitment to quality and customer satisfaction, providing you with peace of mind knowing that your investment is protected.

Trust in our decades of experience and expertise to enhance your spa experience with Australian Spa Covers. Discover why countless customers rely on us for superior quality, exceptional service, and stylish spa covers that stand the test of time.





HOW ARE COVERS ARE MADE

At Australian Spa Covers, we pride ourselves on our unwavering commitment to excellence, which is evident in every step of our meticulous manufacturing process. Our journey begins with a team of skilled designers who harness advanced software to create detailed plans that serve as the blueprint for our exceptional products.

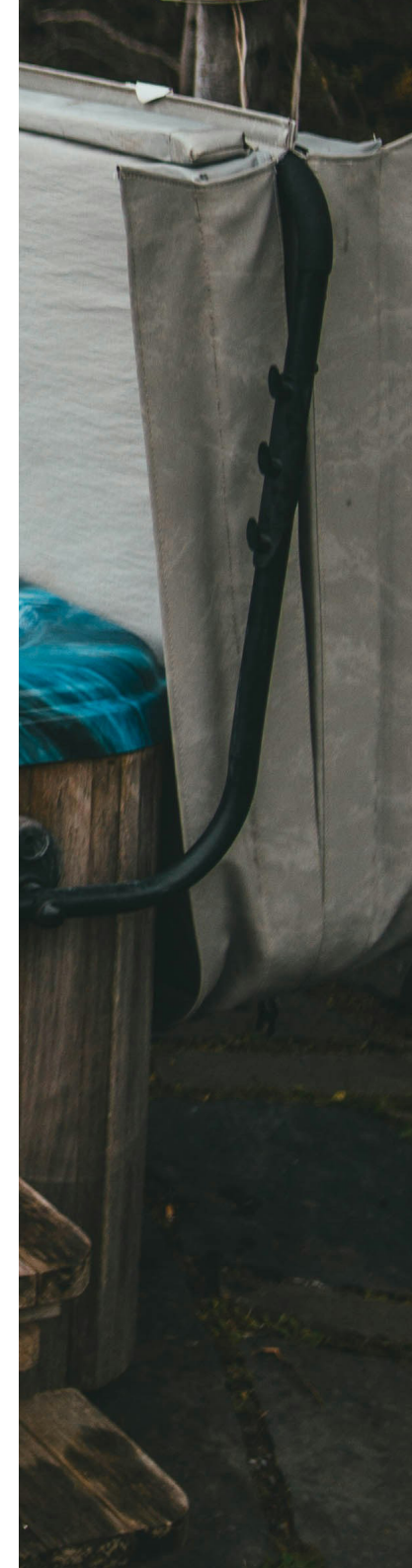
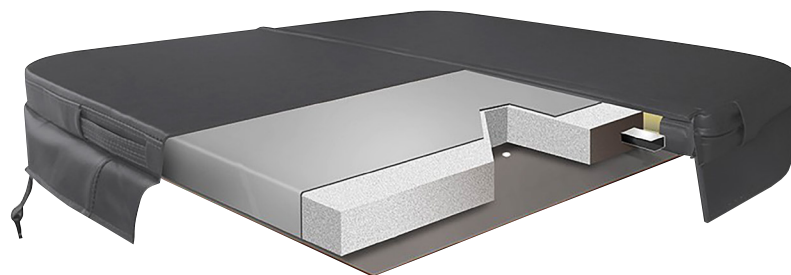
Central to our process is the careful selection of materials renowned for their durability and aesthetic appeal. Each material is chosen with precision to ensure it not only meets but exceeds our rigorous standards. These materials undergo precise cutting and shaping in our state-of-the-art facility, where advanced machinery guarantees accuracy in every component.

Our dedicated sewing team, known for their craftsmanship and attention to detail, meticulously assembles each piece. Every stitch is placed with care to ensure the perfect fit and finish that our customers expect. Meanwhile, our polystyrene cores undergo meticulous preparation through advanced manufacturing techniques. Each core is cut to exact specifications and enveloped in protective materials to ensure optimal insulation and durability.

Following assembly, every product undergoes a comprehensive finishing process. Here, the cover is seamlessly integrated into the sewn material, with meticulous final touches applied to enhance both the aesthetic appeal and functional performance.

Quality control is the cornerstone of our manufacturing ethos. Each Australian Spa Cover undergoes rigorous inspection at multiple stages of production to uphold our exacting standards. This rigorous process ensures that every cover leaving our facility is of the highest quality, promising not only exceptional beauty but also unparalleled durability and performance.

Discover how Australian Spa Covers can elevate your spa & swim spa experience with products crafted with precision, care, and an unwavering commitment to quality.





SPA COVER COLOURS

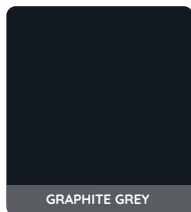
* Ask Australian Spa Covers for vinyl colour swatches for true colour representations.



STANDARD SPA COVER RANGE



ELITE SPA COVER RANGE



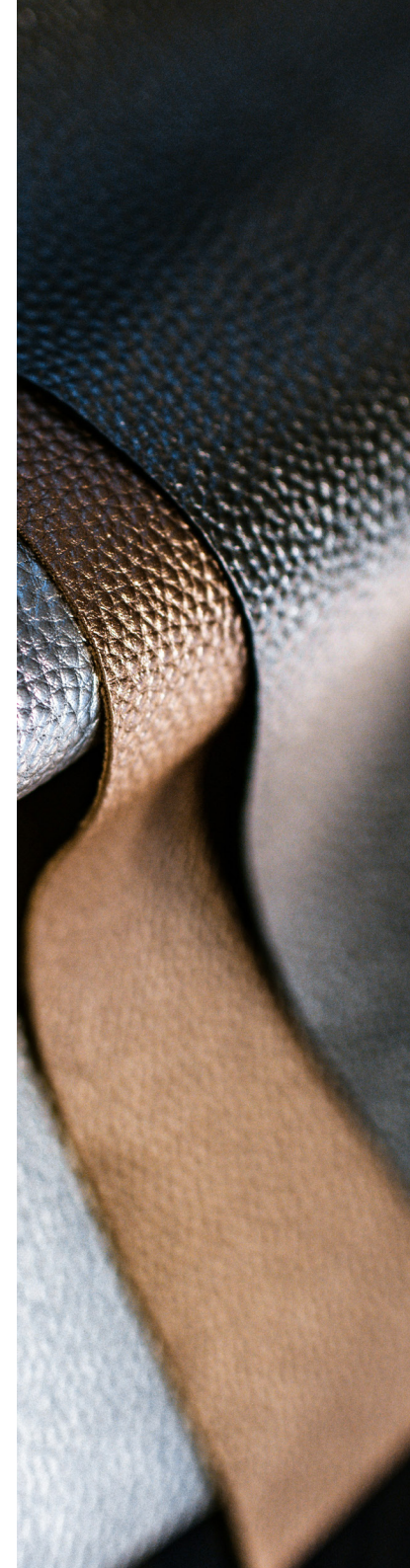
PREMIUM SPA COVER RANGE - ROLL-ON ONLY

Immerse yourself in elegance and style with our exclusive range of contemporary colours from the Australian Spa Covers collection. Carefully curated to harmonize seamlessly with both modern design trends and timeless, traditional styles, our colour palette is designed to elevate the aesthetic appeal of any spa environment.

Each colour in our collection is meticulously selected to ensure it not only meets but exceeds expectations of quality and visual appeal. From vibrant hues that make a bold statement to soothing neutrals that create a serene atmosphere, our covers are crafted to enhance the beauty of your spa while providing reliable protection.

Discover how Australian Spa Covers can transform your spa experience with our sophisticated collection, where elegance meets durability for lasting enjoyment and style.

Note: Colours may appear differently than in real life. For utmost accuracy, we encourage you to order a physical colour swatch book. Our dedicated support team is ready to assist you in selecting the perfect colour that complements your personal taste and spa setting.



SPA COVER SHAPES



SQUARE /
RECTANGLE



SQUARE
WITH ROUND
CORNERS



CUT OFF
CORNER



DOUBLE
CUT OFF
CORNERS



CIRCLE



OCTAGON



CUSTOM
SHAPE

At Australian Spa Covers, we understand that spas and swim spas come in various shapes and sizes, and each requires a cover that fits perfectly to maximize efficiency and protection. Here's how we cater to different shapes:

Rectangular Spas: These are a common shape for traditional spas. Our covers for rectangular spas are meticulously measured and crafted to ensure a precise fit, covering the entire surface area snugly.

Square Spas: Similar to rectangular spas but with equal sides, square spa covers are tailored to match the specific dimensions, providing a neat appearance and effective insulation.

Round Spas: Round spas require circular covers that fit snugly around the edges. We ensure our round spa covers are tailored to fit the diameter perfectly, maintaining a tight seal for optimal energy efficiency.

Irregular Shapes: For spas or swim spas with unique or irregular shapes, our customization process comes into play. We take measurements of your spa's outline to create a bespoke cover that matches its contours accurately.

Swim Spas: These larger units combine the features of a pool and a spa, often with a rectangular shape. Our swim spa covers are designed to handle the extended length and provide complete coverage, maintaining insulation and protection across the entire surface area.

Regardless of the shape of your spa or swim spa, our covers are crafted with durability and performance in mind. We use high-quality materials that withstand the elements and ensure long-term protection for your investment.

Choosing Australian Spa Covers means choosing covers that not only fit perfectly but also enhance the aesthetic appeal of your spa while optimizing energy efficiency and protection. Our commitment to quality craftsmanship and customer satisfaction ensures that each cover we produce meets and exceeds your expectations.





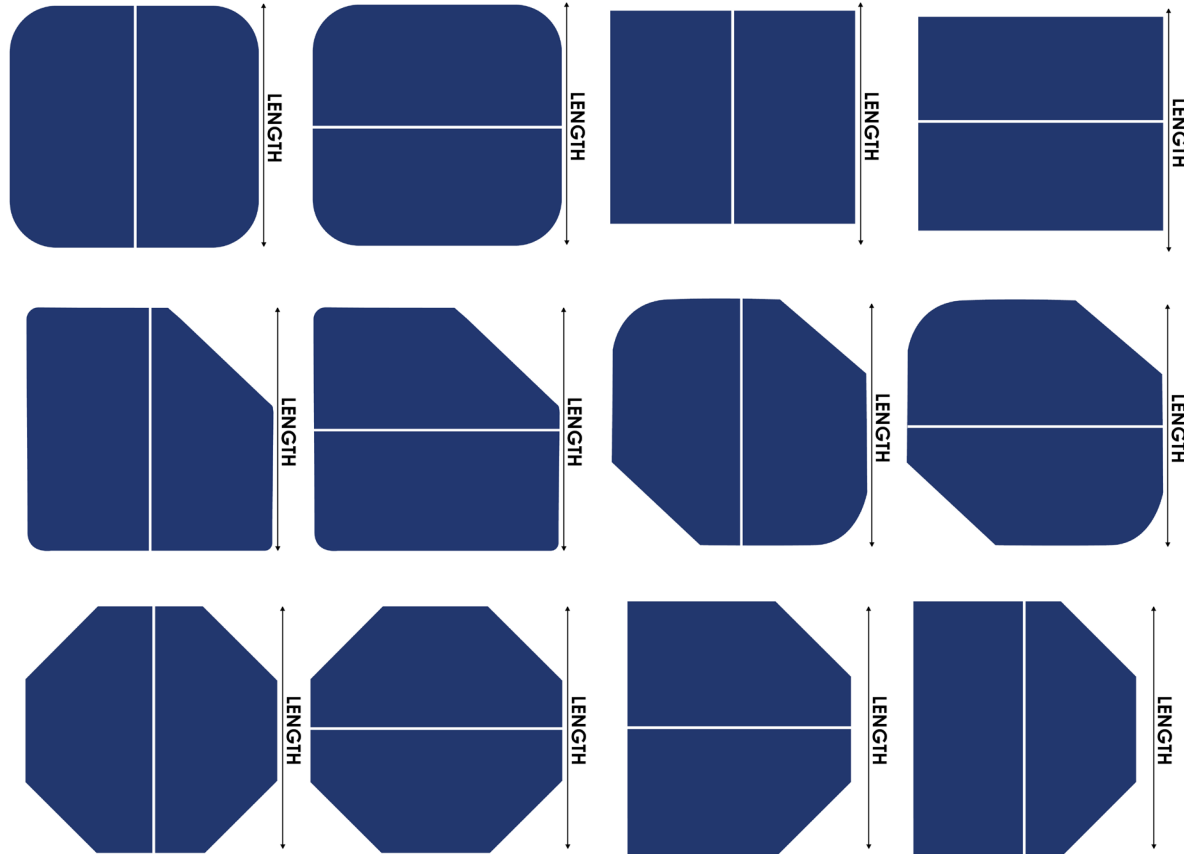
SPA COVER FOLDS

At Australian Spa Covers, we offer two different fold directions to suit your preferences of how you would like to access your spa:

Please note this is only applicable for spa covers that are up to 2400mm long.

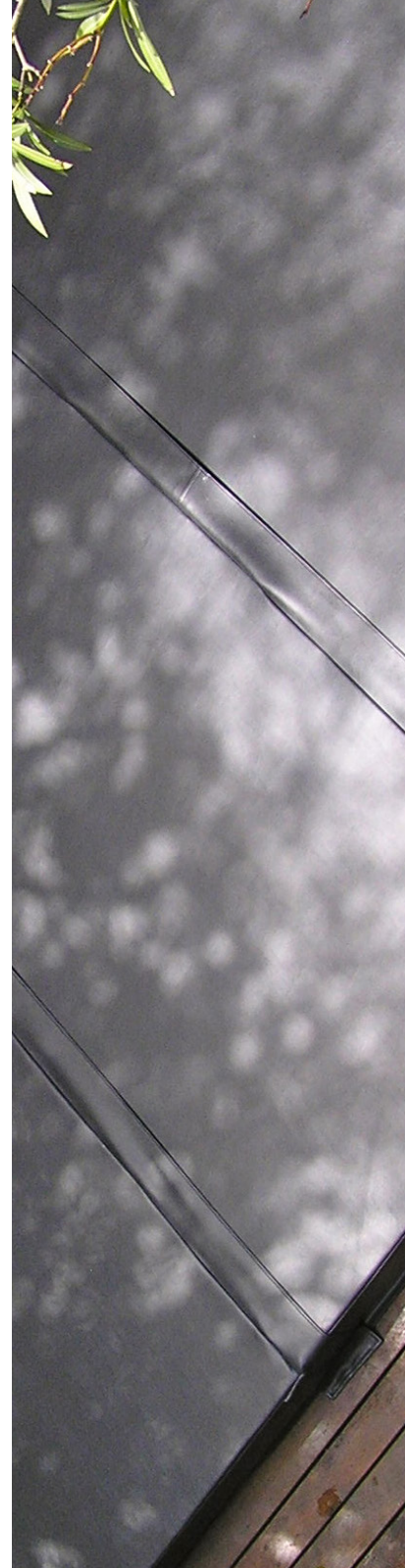
Standard Fold: Our standard fold direction is two-pieces divided along the longest dimension (the length) of the spa. This means the fold runs along the middle of the length, and when folded, the cover creates two halves along its longest side.

Opposite Fold: Our opposite fold direction is two-pieces divided along the shortest dimension (the width) of the spa. The fold runs across the middle of the width, creating two halves along the shorter side when folded.



The choice between a standard or opposite fold depends on factors like ease of handling, storage space, and user preference for how the cover will be folded and removed.

Our covers are crafted using durable materials and advanced manufacturing techniques. This ensures they not only complement the aesthetic of your spa but also optimise energy efficiency and provide reliable protection.





SPA COVER FOLD STYLE:

Size Group – Up to 2400mm

You will receive a two-piece spa cover. This will taper from 100mm in the centre of the cover to 55mm at the ends of the cover. The next section breaks down our fold style and fold direction. We recommend choosing the standard option for fold style and fold direction unless you would like further customisation.

Please note that our Elite Tier (only applicable to Square or Rectangle with Rounded Corners) tapers from 140mm in the centre of the cover to 70mm at the ends of the cover.

Fold style:

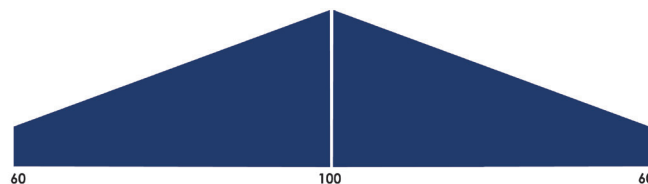
Our standard fold style is one central fold that is permanently sewn together. Our separate pieces fold style is two separated pieces with the option to join them together.

Size Group – Up to 3600mm

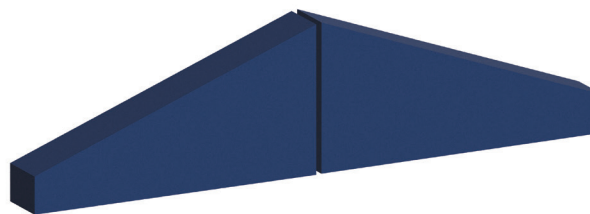
You will receive a three-piece spa cover. This will taper from 100mm in the centre of the cover to 55mm at the ends of the cover. The next section breaks down our fold style and fold direction. We recommend choosing the standard option for fold style and fold direction unless you would like further customisation.

Fold style:

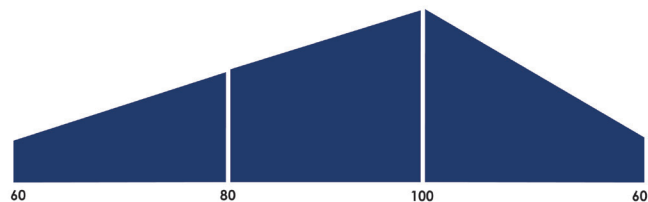
Our standard fold style consists of a single fold with two-pieces permanently sewn together, leaving a separation for the third piece. Our separate pieces fold style consists of three-pieces that can be joined together if needed.



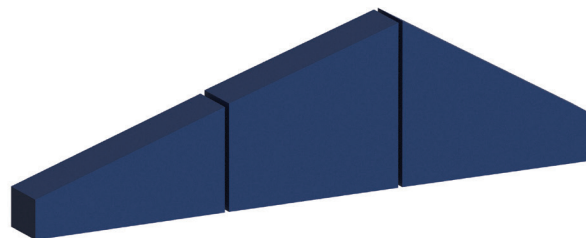
LINE DRAWING 2 PIECE



3D DRAWING 2 PIECE



LINE DRAWING 3 PIECE



3D DRAWING 3 PIECE





SPA COVER FOLD STYLE:

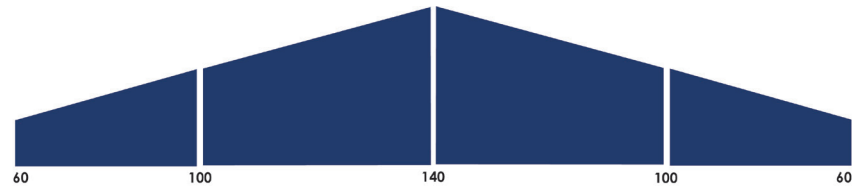
Size Group – Up to 4800mm

You will receive a four-piece spa cover. This will taper from 140mm in the centre of the cover to 55mm at the ends of the cover. The next section breaks down our fold style and fold direction. We recommend choosing the standard option for fold style and fold direction unless you would like further customisation.

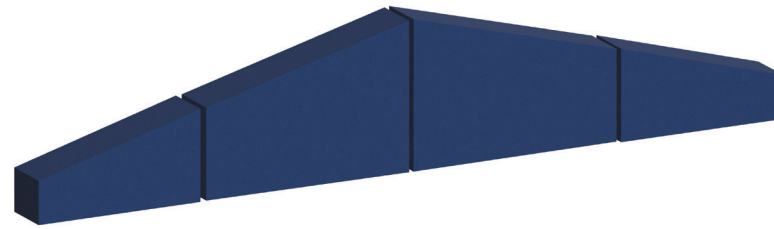
Fold style:

Our standard fold style consists of four-pieces with three separations between them. The first and third separations feature permanently sewn-in folds, while the second separation remains separated with the option to join the entire cover together.

Our separate pieces fold style consists of four-pieces that can be joined together if needed.



LINE DRAWING 4 PIECE



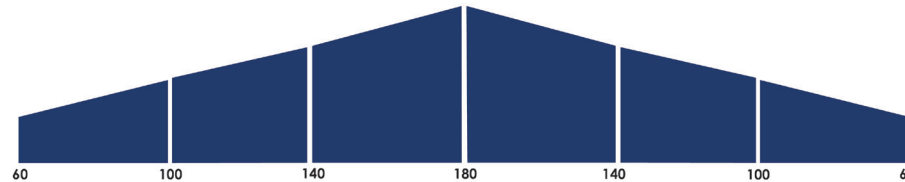
3D DRAWING 4 PIECE

Size Group – Up to 7200mm

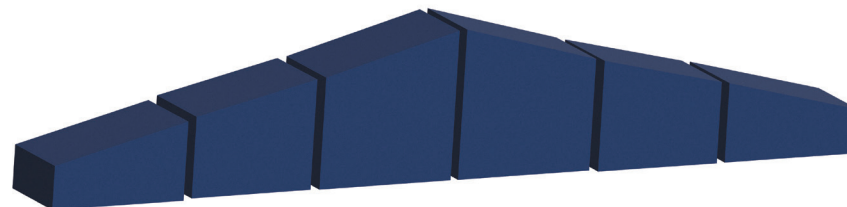
You will receive a six-piece spa cover. This will taper from 180mm in the centre of the cover to 55mm at the ends of the cover. The next section breaks down our fold style and fold direction. We recommend choosing the standard option for fold style and fold direction unless you would like further customisation.

Fold style:

Our standard fold style consists of six pieces with five separations between them. The first, third and fifth separations feature permanently sewn-in folds, while the second and fourth separation remains separated with the option to join the entire cover together. Our separate pieces fold style consists of six-pieces that can be joined together if needed.



LINE DRAWING 6 PIECE



3D DRAWING 6 PIECE





SPA COVER GRADES

TIER 1 - Performance:

Our standard spa cover provides excellent durability, an attractive appearance, and additional features that set it apart from other spa covers.

Features:

- 50kg static weight bearing capacity
- Medium level of insulation
- One central vinyl handle per side
- Standard water runoff design with standard taper
- 2-year warranty
- Standard lockable strap system
- Single drainage hole per piece
- Aluminium reinforced core

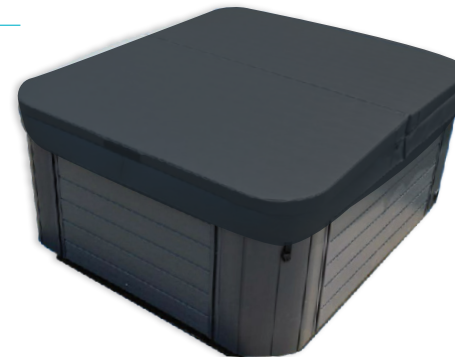


TIER 2 - Endurance:

This model offers the same benefits as our first-tier spa cover but with enhanced insulation and the ability to support more static weight.

Features:

- 100kg static weight bearing capacity
- High level of insulation
- One central vinyl handle per side
- Standard water runoff design with standard taper
- 2-year warranty
- Standard lockable tie down (strap) system
- Single drainage hole per piece
- Aluminium reinforced core



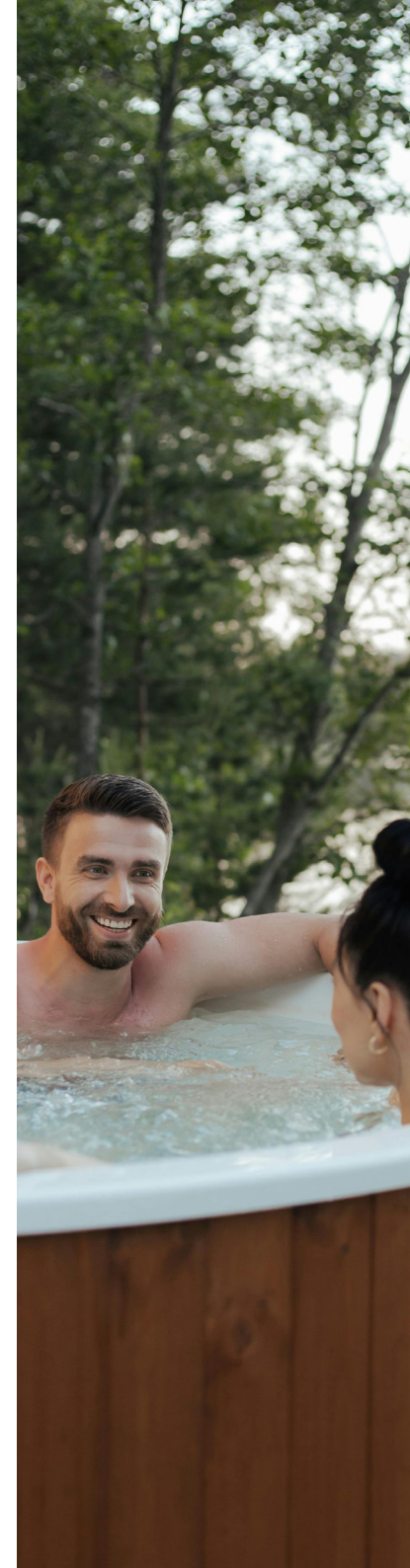
TIER 3 - Elite:

Please note, this product is only available for two-piece Square or Rectangle with Rounded Corners spa covers which are up to 2400mm X 2400mm.

Our premium spa cover is the best in its class, featuring superior water runoff, top-tier insulation, and exclusive extras that make it truly exceptional.

Features:

- | | |
|--|---|
| • 100kg static weight bearing capacity | • Standard lockable tie down (strap) system |
| • Highest level of insulation | • Split skirts on each corner |
| • One central vinyl handle per side | • Five drainage holes per piece |
| • Higher water runoff design with higher taper | • Aluminium reinforced core |
| • 2-year warranty | |





SPA COVER PROTECTANT & CLEANER

Protect and maintain the pristine appearance of your spa cover effortlessly with our Australian Spa Covers Protectant & Cleaner range. Our exceptional protectants and cleaners are designed to provide robust defense against UV-induced damage and the gradual fading caused by sun exposure.

Our Range Includes:

Spa Cover Cleaner: Effectively removes dirt, grime, and residues without compromising the integrity of the cover material.

Spa Cover Protectant: Shields against UV rays to prevent fading and cracking, preserving the cover's longevity and appearance.

Features & Benefits:

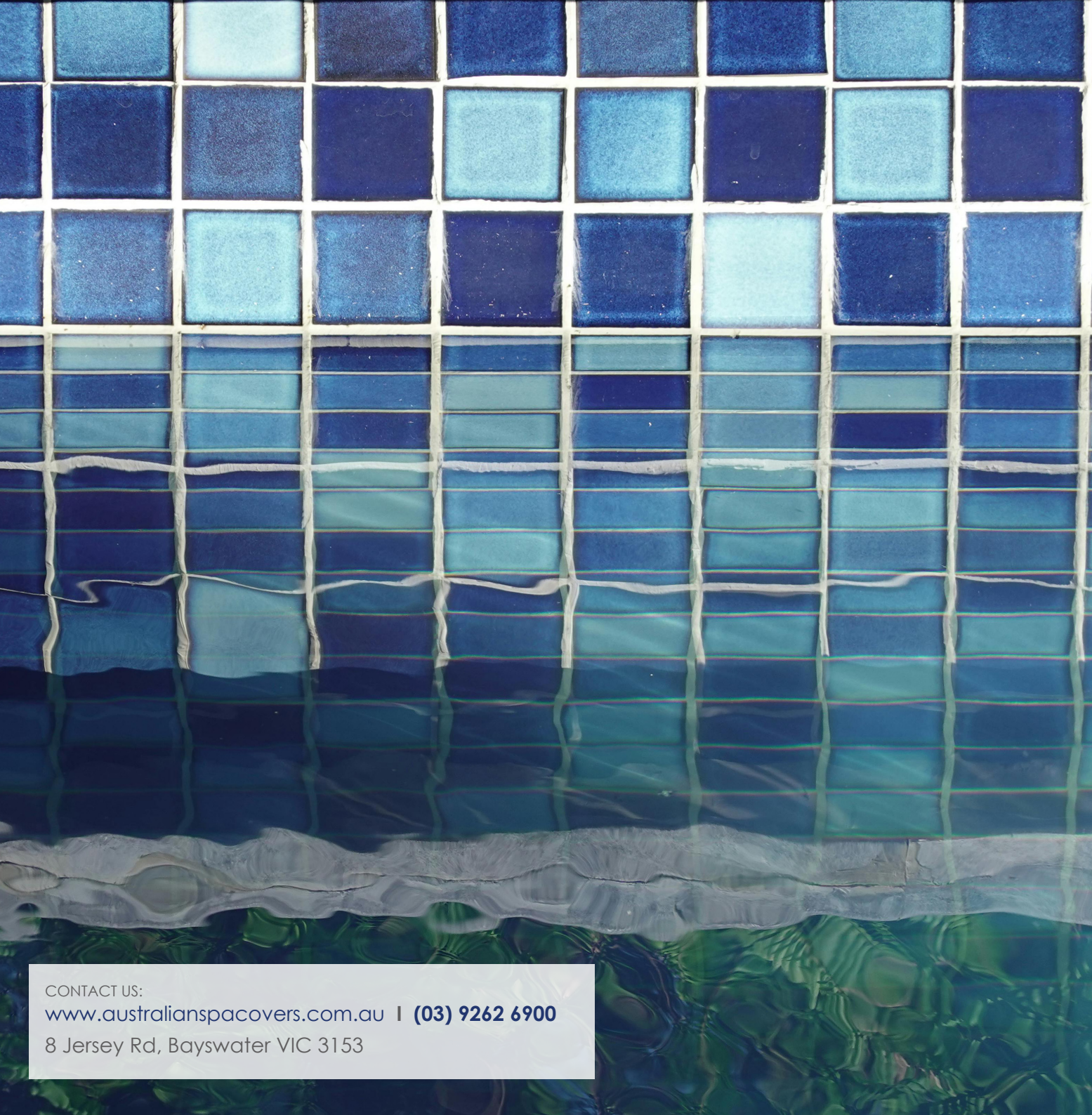
- * **UV Protection:** Contains powerful UV blockers with an impressive SPF 40 rating to safeguard against sun damage.
- * **Long-lasting Results:** Maintains a consistently fresh and new appearance on treated surfaces, enhancing the aesthetic appeal of your spa cover.
- * **No Residue:** Leaves no greasy or oily residue, ensuring a clean finish and a pleasant experience.
- * **Easy Application:** Conveniently packaged in an easy-to-use spray bottle for effortless application and quick maintenance.

Preserve Your Investment

Ensure your spa cover remains in peak condition by incorporating these essential products into your maintenance routine. For purchasing inquiries or further assistance, please do not hesitate to contact us.

Discover how Australian Spa Covers can help you protect and enhance the longevity of your spa cover, ensuring it continues to look and perform its best for years to come.





CONTACT US:
www.australianspacovers.com.au | (03) 9262 6900
8 Jersey Rd, Bayswater VIC 3153



AUSTRALIAN
SPA COVERS

